

**State of Wyoming Corner Record**

(In compliance with the CORNER PERPETUATION AND FILING ACT, Wyoming Statutes, 1977, Section 36-11-101, et. seq., and the Rules and Regulations of the Board of Registration for Professional Engineers and Professional Land Surveyors)

Reverse side of this form may be used if more space is needed.

Record of original survey and citation of source of historical information (if corner is lost or obliterated). Description of corner monumentation evidence found and/or monument and accessories established to perpetuate the location of this corner. Sketch of relative location of monument, accessories, and reference points with course and distance to adjacent corner(s) (if determined in this survey). Method and rationale for reestablishment of lost or obliterated corner.

**G.L.O. Notes:** U.S. Deputy Surveyor, Edwin James, June 20, 1871; 39.80 Chains... Set a sand stone 17 x 12 x 6 for quarter section corner.

**Found:** 2" x 12" red sandstone 4" out of the ground with a faintly marked 4 on the North face. Monument was found in a East-West fenceline.

**Set:** No. 5 x 18" rebar flush to the ground along the north face of the stone as a witness.

200708  
 LARAMIE COUNTY CLERK  
 CHEYENNE, WY.  
 97 APR 7 PM 4 40

Date of Field Work: 16, May, 1994 Office Reference: EXXON LOOSELEAF

**CROSS INDEX DIAGRAM**

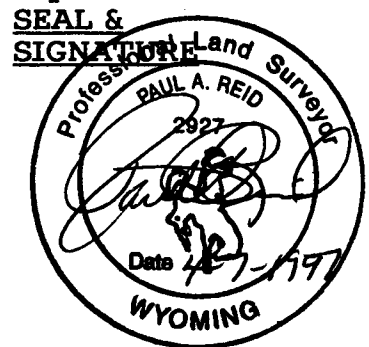
A	1	2	3	4	5	6	7	8	9	10	11	12	13	14	15	16	17	18	19	20	21	22	23	24	25	A
B																										B
C		6																								C
D			5																							D
E				4																						E
F					3																					F
G						2																				G
H							1																			H
I																										I
J																										J
K																										K
L																										L
M																										M
N																										N
O																										O
P																										P
Q																										Q
R																										R
S																										S
T																										T
U																										U
V																										V
W																										W
X																										X
Y																										Y
Z																										Z

Firm/Agency, Address

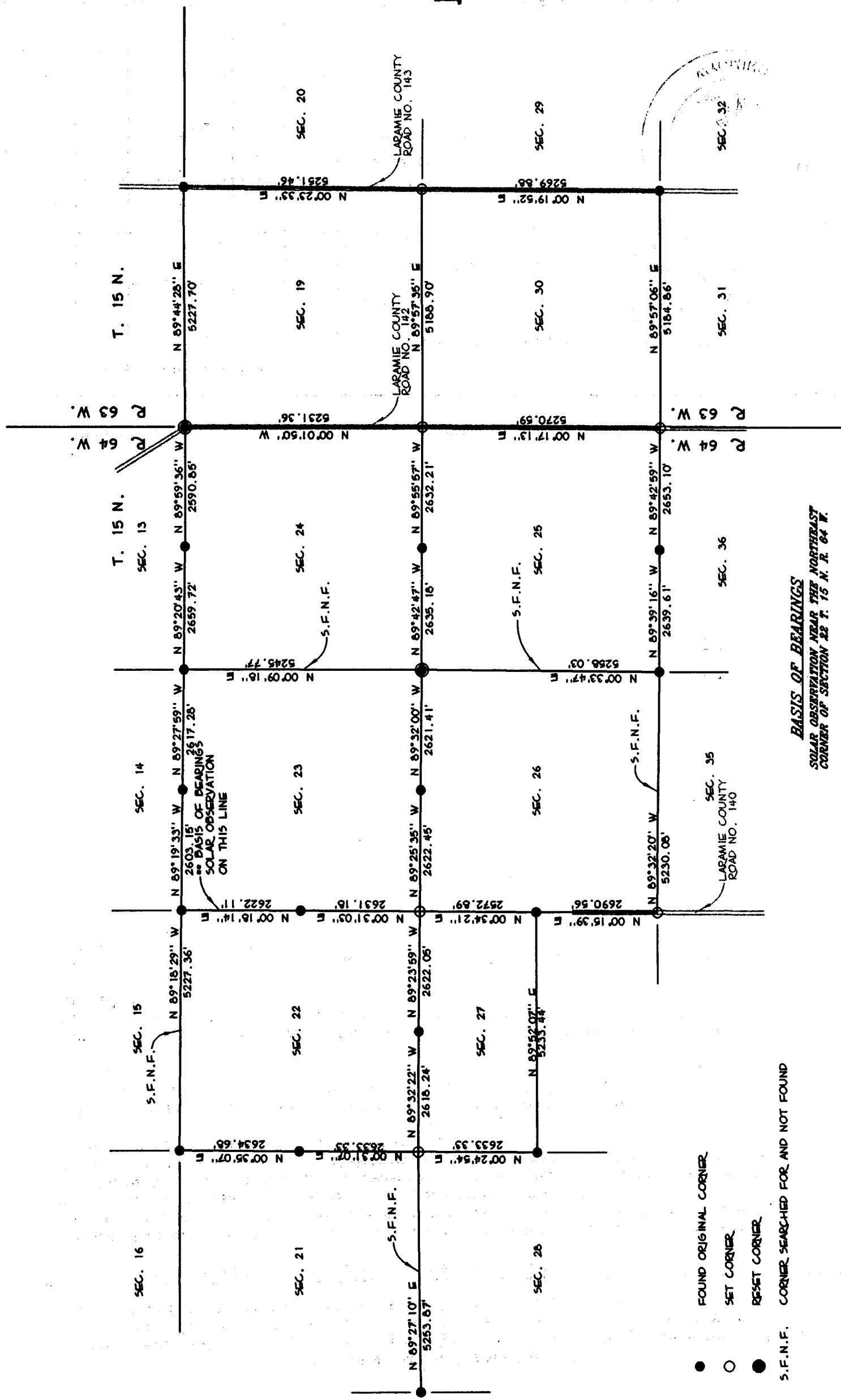
Paul A. Reid, A.V.I.p.c.  
2035 Westland Road  
Cheyenne, WY 82001

Telephone Number:  
(307)-634-6017

This corner record was prepared by me or under my direction and supervision.



Corner Name: S 1/4 Cor. Section: 22 T 15N R 64W;6TH P.M. Cross-Index No.: R-15



**BASIS OF BEARINGS**

SOLAR OBSERVATION NEAR THE NORTHEAST CORNER OF SECTION 22 T. 15 N. R. 64 W.

- FOUND ORIGINAL CORNER
- SET CORNER
- RESET CORNER
- S.F.N.F. CORNER SEARCHED FOR AND NOT FOUND